



**Address:** Marfaa -Wazzan Street, Beirut, Lebanon. **Client:** Merit Real Estate SAL. **Completion:** 2011.  
**Gross floor area:** 784 m<sup>2</sup>. **Façade and energy consultant:** Arup Façade Engineering. **Landscape architecture:** Atelier Renée el Khazen. **Main materials:** stone, stainless steel, glass, concrete. **Number of work stations:** 226. **Lighting:** basic daylight lighting fixtures. **Climatization:** VRV system. **Types of offices:** individual, combi-office, open-plan, lounge. **Conference room:** 4. **Restaurants:** 1. **Setting:** city center.



## CMA-CGM Headquarters

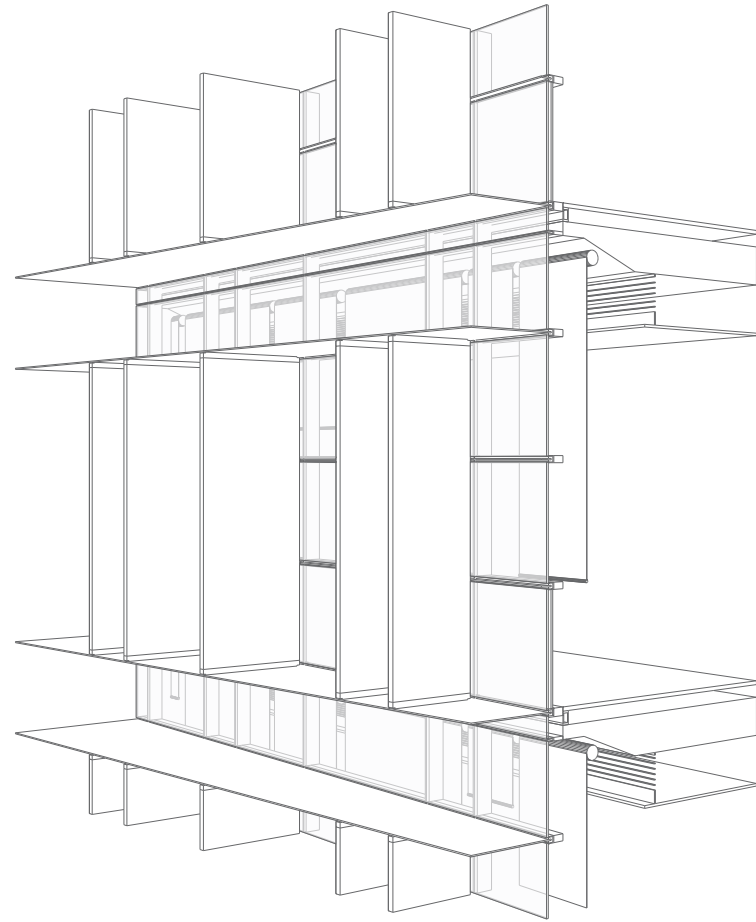
Beirut

Overlooking Beirut and its port, this transparent composite structure hosts the world's third largest container shipping company into three slender sculpted masses, grouped around a full-height atrium and a double-height lobby. The atrium serves as a central element, which links the various components together through suspended bridges. The double-height lobby is similarly transparent and offers views of the sea and harbor. An asymmetrical grid of brushed steel and Pietra Serena stone louvers shields it. Through its wavelike shape it varies in thickness and stands in response to the surroundings. Depending on the viewer's perspective the building gives the impression to be only built of glass, but as much stone was used as if it was stone clad. Stripes of frit glass are used to mask structural and technical elements and enhance privacy. When illuminated at night, the building looks like a glowing ship afloat on a darkened sea.

↑ | North façade, facing harbor  
 → | West façade, three building volumes







← | **Diagram**, glazed façade with stone louvers and stainless steel horizontal blades  
 ↓ | **Façade**, at night

↑ | **Façade detail**, double skin with brushed stainless steel horizontal sun breakers and solid Pietra Serena vertical stone louvers  
 ← | **Floor plans**, ground, typical, fifth floor

